



Compost Turner for dairy farm 100 ton per day :

84798200:

PI



(organic)

(N, P, K)

organic

).....

(



:

organic

)

(

)

(

)

(



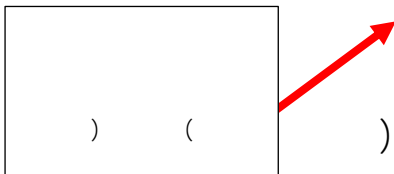
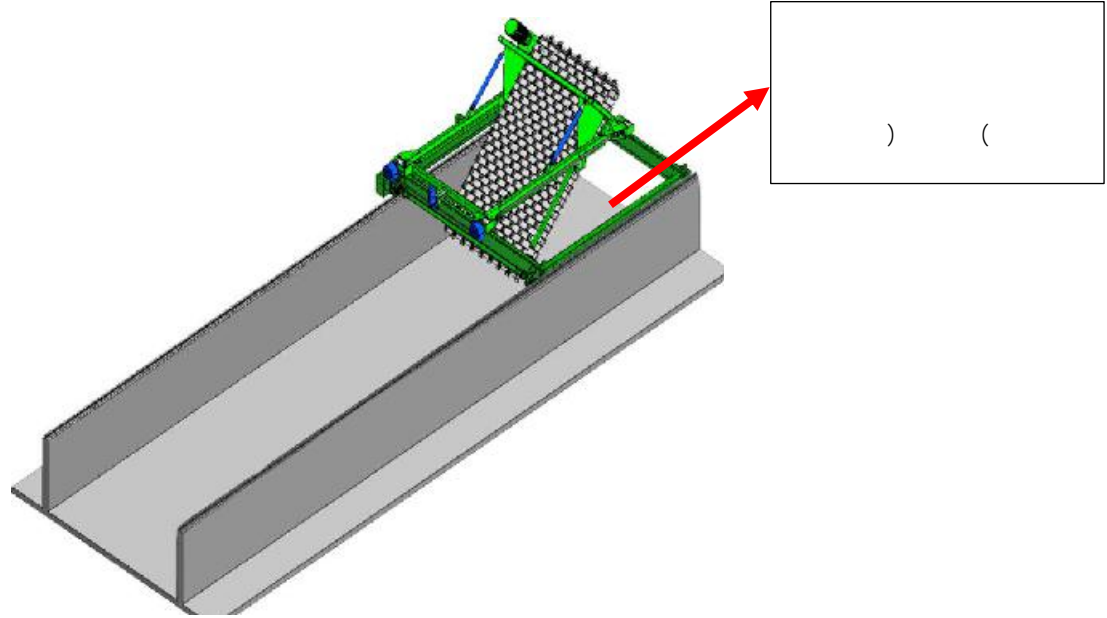


)

)

(

(



) (



) (

系列型号 Models	FA38	FB38	FC38
配套动力 Power (kW)	31.55	31.55	31.55
翻抛托板宽度 Face Width (mm)	2000	2000	2000
物料最大高度 Materials Height up to (mm)	1800	1800	1800
工作速度 Work Velocity (m/h)	150	150	150
空载速度 Unloaded Velocity (m/h)	300	300	300
最大翻抛能力 Capacity up to (m ³ /h)	540	540	540
每次翻抛物料位移 Displacement (m)	4	4	4
设备最大升起高度 Raising Height (mm)	4250	4250	4250
发酵槽宽度 Channel Width (m)	4/6/8	10/12/14	16/18/20
发酵槽高度 Channel height (mm)	2000	2000	2000

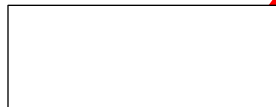
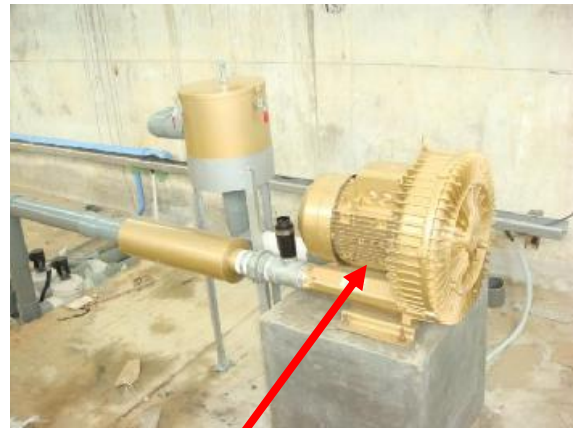
) (

) (

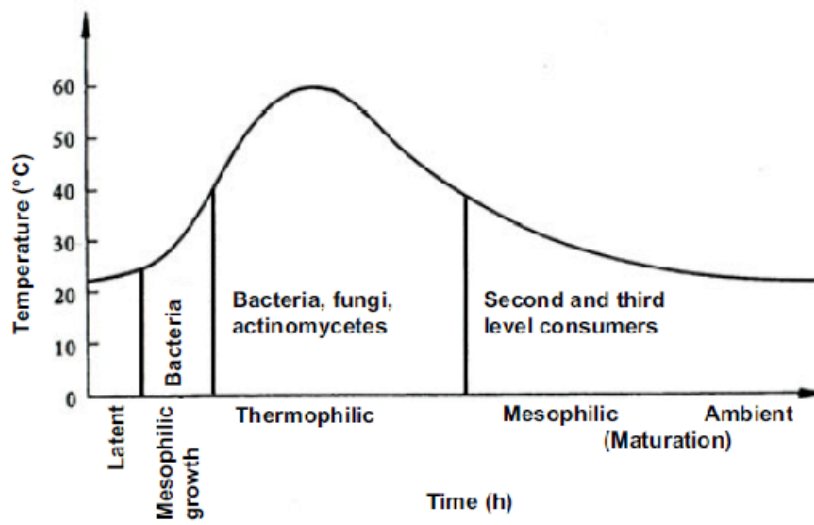


6

7



N C



(Mesophilic phase):

N C

pH

:(Thermophilic and Hygienization phase)

(

)

C

)



6

pH

C

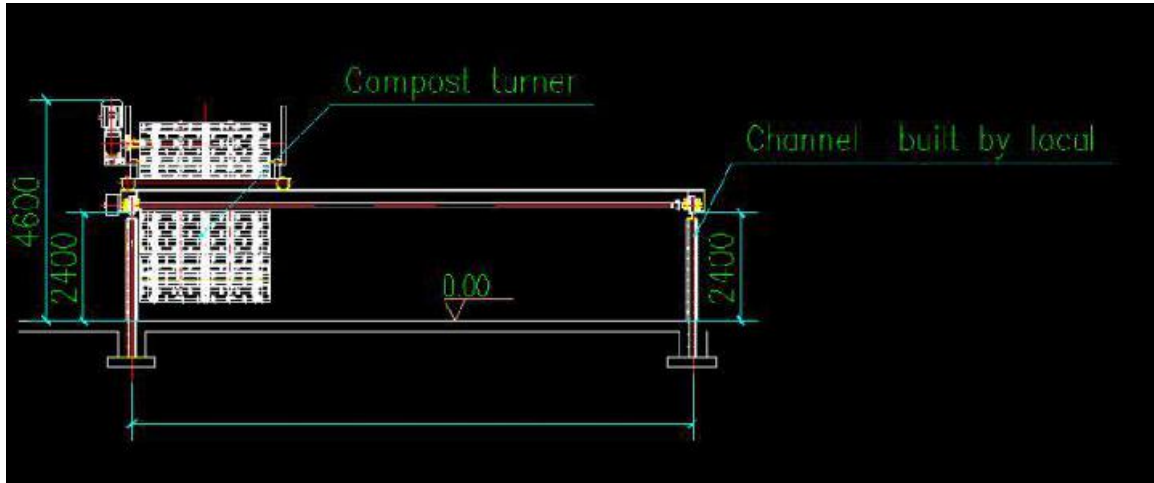
7

:(Cooling or Mesophilic phase II) II -

8

pH

: Maturation phase -



System 02.00	Grinding and Sifting system
System 03.00	Mixing system
System 04.00	Pelleting system
System 05.00	Bagging system
System 06.00	Auxiliary system
System 07.00	Plant Controls & Computer

System 02.00 Grinding and Sifting System



Grinder



Disc Feeder



Sifter

Disc Feeder

Model	DF1250
Output (kg/h)	10-110
Power (kw)	3.00
Diameter (mm)	1250
Dimension 寸 (mm)	1250 × 1250 × 1580
Weight (kg)	970

Grinder

Model	VMCH1000
Power (kw)	30
Output (t/h)	4~8
Weight (kg)	2500
Dimension (mm)	1807 × 1260 × 2100

Sifter

Model	GS1500
Output (kg/h)	2000-16000
Power (kw)	15
Dimension (mm)	5350 × 3000 × 2400

System 03.00 Mixing System

K P N



Mixer

Model	Power (Kw)	Output (t/min)	Wall height(mm)
VM1800	5.5	0.40~0.45/5	1800×400

System 04.00 Pelleting System

6



Specification

Moisture 12-30%

Diameter of die 3-6mm

Power 75-90kw

Output 3-6t/h



Pelleting System



System 05.00 Bagging System



Bagger

System 06.00 Auxiliary System

...

System 07.00 Plant Controls & Computer